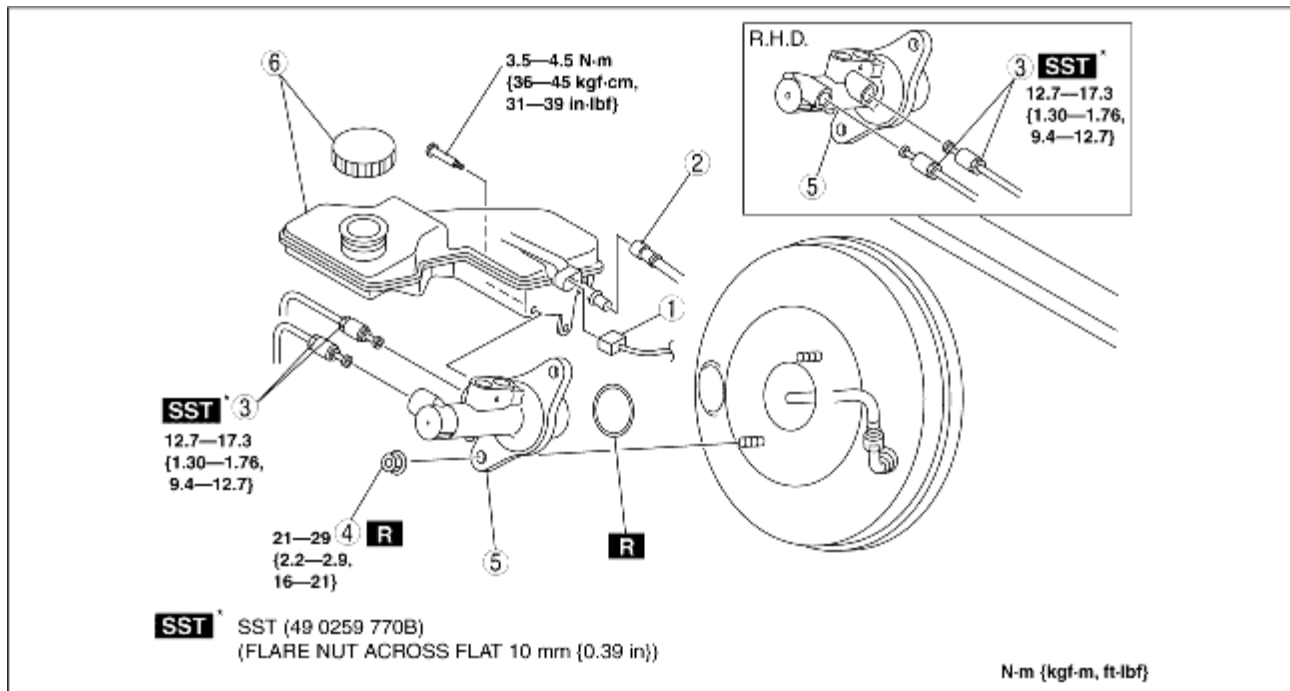


# MASTER CYLINDER REMOVAL/INSTALLATION

B3E041143400W02

1. For L.H.D., remove the battery and battery tray. (See [BATTERY REMOVAL/INSTALLATION \[ZJ, Z6\]](#).) (See [BATTERY REMOVAL/INSTALLATION \[LF\]](#).)
2. Remove in the order indicated in the table.
3. Install in the reverse order of removal.



B3E0411W104

1	Brake fluid level sensor connector
2	Reserve hose (MTX) (See <a href="#">Reserve Hose Removal Note.</a> ) (See <a href="#">Reserve Hose Installation Note.</a> )
3	Brake pipe
4	Nut
5	Master cylinder
6	Reserve tank, cap

## Reserve Hose Removal Note

1. Remove the reserve hose from the reserve tank while pressing the point indicated by the arrow in the figure.

## **Reserve Hose Installation Note**

1. Insert the reserve hose to the reserve tank until a click is heard.
2. Verify that the reserve hose is firmly installed by pulling it, and push it into the reserve tank again.